

# Charging the Life

Driving a green future with EVSIS



EVSIS

# DC charger

30kW

## Key Features

CE, cMETus(NRTL/CSA), FCC Compliant

CTEP/NTEP, Energy Star Compliant

Networked or non-networked capabilities

Remote monitoring and update for optimal operation

Fits all CCS vehicles



High energy efficiency

Effortless charging

Easy installation and minimal maintenance

Advanced service support

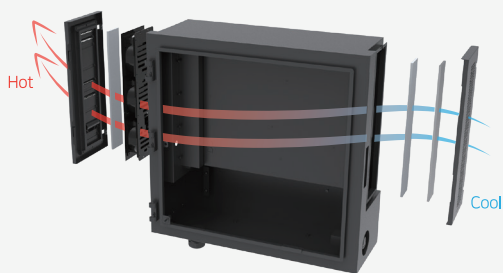
JC-9A31-30-CX (CE)

JC-9A31-30-CT (UL)

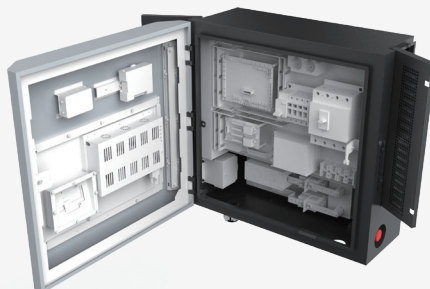
## Specifications

General	Connector	CCS
	Communication with EV	IEC 61851 PLC
	Display	12.1" LCD Display, Touch screen
	Support language	English, French, Spanish (Other languages available upon request)
	Push buttons	1 emergency stop button
	User authentication	ISO/IEC 14443 A / B Mifare RFID reader, Credit card reader
Electric	Input	3Ø4W, 400VAC, 50/60Hz, Max.33kVA (CE Version) 3Ø4W, 480VAC, 60Hz, Max.33kVA (UL Version)
	Input   THD	< 5%
	Output	Voltage : 150~1,000VDC(Max) Current : 80A(Max) Max power : 30kW
	Power factor	> 0.98 (Full Scale)
	Charging mode	CC, CV
	Voltage accuracy	±1.0% (Full Scale)
	Current accuracy	±1.0% (Full Scale)
	Max. efficiency	> 95% (at rated voltage, rated current)
	Isolation impedance	10MΩ@1,000V
Environment	Operating temperature	-30°C ~ 50°C (-22°F ~ 122°F with derating)
	Humidity	< RH95% (Non-condensing)
Communication	Network interface	Ethernet, Cellular, WLAN
	Protocol	OCPP1.6J / 2.0.1
Safety standard	Protection	Over voltage, Over current, Short-circuit, Over temperature, Earth leakage, Surge protection, Contactor welding
Mechanical	Protection degree	IP54 (NEMA 3R), IK10
	Cooling	Forced air
	Charging cable length (Standard)	6m (19.7ft) / Adjustable upon request
	Dimension	650(W) x 622.3(H) x 325.1(D) mm (25.6(W) x 24.5(H) x 12.8(D) inch)
	Weight	91kg (200lb)

## Feature highlights



Advanced internal design creates airflow between power modules to solve heat generation problem



Front and side doors can be opened for maintenance



Can be wall-mounted or installed on a pedestal (optional)

# DC charger

100kW

## Key Features

CE, cMETus(NRTL/CSA), FCC Compliant  
CTEP/NTEP, Energy Star Compliant  
Remote monitoring and update for optimal operation  
Simultaneous charging  
Fits all CCS, CHAdeMO, NACS vehicles



High energy efficiency  
Effortless charging  
Easy installation and minimal maintenance  
Advanced service support  
New cable retraction system with long cables

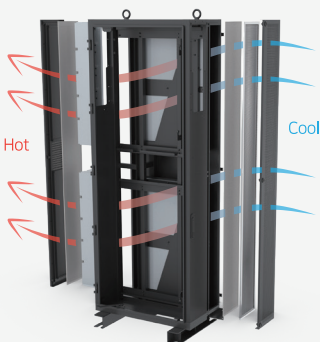
JC-9932-100-CX (CE)

JC-9932-100-CT (UL)

# Specifications

<b>General</b>	Connector	CCS, NACS, CHAdeMO (optional)	
	Communication with EV	IEC 61851 PLC	
	Display	24" LCD Display, Touch screen	
	Support Language	English, French, Spanish (Other languages available upon request)	
	Push Buttons	1 emergency stop button	
	User Authentication	ISO/IEC 14443 A / B Mifare RFID reader, Credit card reader	
<b>Electric</b>	Input	3Ø4W, 400VAC, 50/60Hz, Max.110kVA (CE Version) 3Ø4W, 480VAC, 60Hz, Max.110kVA (UL Version)	
	Input   THD	< 5%	
	Output	1CH Voltage : 150~1,000VDC(Max) Current : 200A(Max) Max power : 100kW (50kW each for simultaneous charging)  2CH Voltage : 150~1,000VDC(Max) Current : 200A(Max) Max power : 100kW (50kW each for simultaneous charging)	
	Power Factor	> 0.98 (Full Scale)	
	Charging Mode	CC, CV	
	Voltage Accuracy	±1.0% (Full Scale)	
	Current Accuracy	±1.0% (Full Scale)	
	Max. Efficiency	> 95% (at rated voltage, rated current)	
	Isolation Impedance	10MΩ@1,000V	
	<b>Environment</b>	Operating temperature	-30°C ~ 50°C (-22°F ~ 122°F with derating)
		Humidity	< RH95% (Non-condensing)
<b>Communication</b>	Network Interface	Ethernet, Cellular, WLAN	
	Protocol	OCPP1.6J / 2.0.1	
<b>Safety standard</b>	Protection	Over voltage, Over current, Short-circuit, Over temperature, Earth leakage, Surge protection, Contactor welding	
<b>Mechanical</b>	Protection degree	IP54 (NEMA 3R), IK10	
	Cooling	Forced air	
	Charging Cable Length (Standard)	6m (19.7ft) / Adjustable upon request	
	Dimension	1,064(W) x 1,900(H) x 523(D) mm (42(W) x 74.8(H) x 20.6(D) inch)	
	Weight	393kg (866lb)	

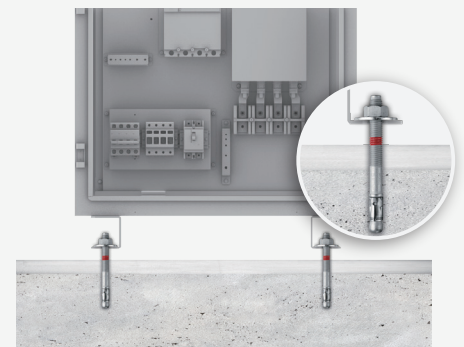
## Feature highlights



Advanced internal design creates airflow between power modules to solve heat generation problem



Sterilize connector with UV-C LED



Aseismic design (optional)

# DC charger

180kW / 240kW

## Key Features

CE, cMETus(NRTL/CSA), FCC, CTEP/NTEP, Energy Star Compliant

Remote monitoring and update for optimal operation

Maximize space utilization

Simultaneous charging

Fits all CCS and NACS vehicles

Compliant with NEVI standards and meet BABA Phase 2 requirements, including 55% US-related costs.



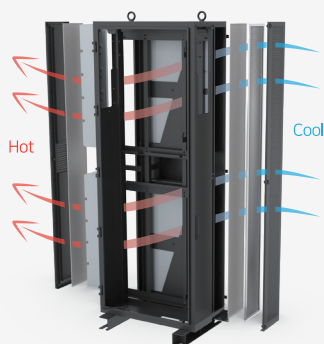
JC-9942-180/240-CX (CE)

JC-9932-180/240-CT (UL)

# Specifications

Specification	DC Charger 180kW		DC Charger 240kW	
General	Connector	CCS, NACS		
	Communication with EV	IEC 61851 PLC		
	Display	12.1" LCD Display, Touch Screen		
	Support Language	English, French, Spanish (Other languages available upon request)		
	Push Buttons	1 emergency stop button		
	User Authentication	ISO/IEC 14443 A/B Mifare RFID reader, Credit card reader, NFC		
Electric	Input	3Ø4W, 400VAC, 50/60Hz, Max.198kVA or 264kVA (CE Version) 3Ø3W (no neutral), 480VAC, 60Hz, Max.198kVA or 264kVA (UL Version)		
	Input   THD	< 5%		
	Output	1CH Voltage : 200~1,000VDC(Max) Current(CE) : 350A(Max) Current(UL) : 375A(Max) Max power : 180kW (90kW each for simultaneous charging)	1CH Voltage : 200~1,000VDC(Max) Current(CE) : 350A(Max) Current(UL) : 375A(Max) Max power : 240kW (120kW each for simultaneous charging)	
		2CH Voltage : 200~1,000VDC(Max) Current(CE) : 350A(Max) Current(UL) : 375A(Max) Max power : 180kW (90kW each for simultaneous charging)	2CH Voltage : 200~1,000VDC(Max) Current(CE) : 350A(Max) Current(UL) : 375A(Max) Max power : 240kW (120kW each for simultaneous charging)	
	Power Factor	>0.98 (Full Scale)		
	Charging Mode	CC, CV		
	Voltage Accuracy	±1.0% (Full Scale)		
	Current Accuracy	±1.0% (Full Scale)		
	Max, Efficiency	> 95% (at rated voltage, rated current)		
	Isolation Impedance	10MΩ@1,000V		
	Environment	Operating temperature	-30°C ~ 50°C (-22°F ~ 122°F with derating)	
Humidity		< RH95% (Non-condensing)		
Communication	Network Interface	Ethernet, Cellular, WLAN		
	Protocol	OCPP1.6J / 2.0.1		
Safety standard	Protection	Over voltage, Over current, Short-circuit, Over temperature, Earth leakage, Surge protection, Contactor welding		
Mechanical	Protection degree	IP54 (NEMA 3R), IK10		
	Cooling	Forced air		
	Charging Cable Length (Standard)	5.5m (18ft) / Adjustable upon request		
	Dimension	1,046(W) x 1,900(H) x 683(D) mm (41.1(W) x 74.8(H) x 26.9(D) inch)		
	Weight	637kg (1,405lb)		

## Feature highlights



Air-Flow structure increases cooling efficiency



Design all operating parts between 15" and 48" to protect the rights of people with disabilities

# Distributed Charging System

DC high power charger 350kW / 400kW

## Key Features

CE, cMETus(NRTL/CSA), FCC, CTEP/NTEP, Energy Star Compliant

Remote monitoring and update for optimal operation

60m (197ft) of maximum distance between power cabinet and dispenser

Dynamic Power Sharing

Fits all CCS and NACS vehicles

Compliant with NEVI standards and meet  
BABA Phase 2 requirements, including 55%  
US-related costs.

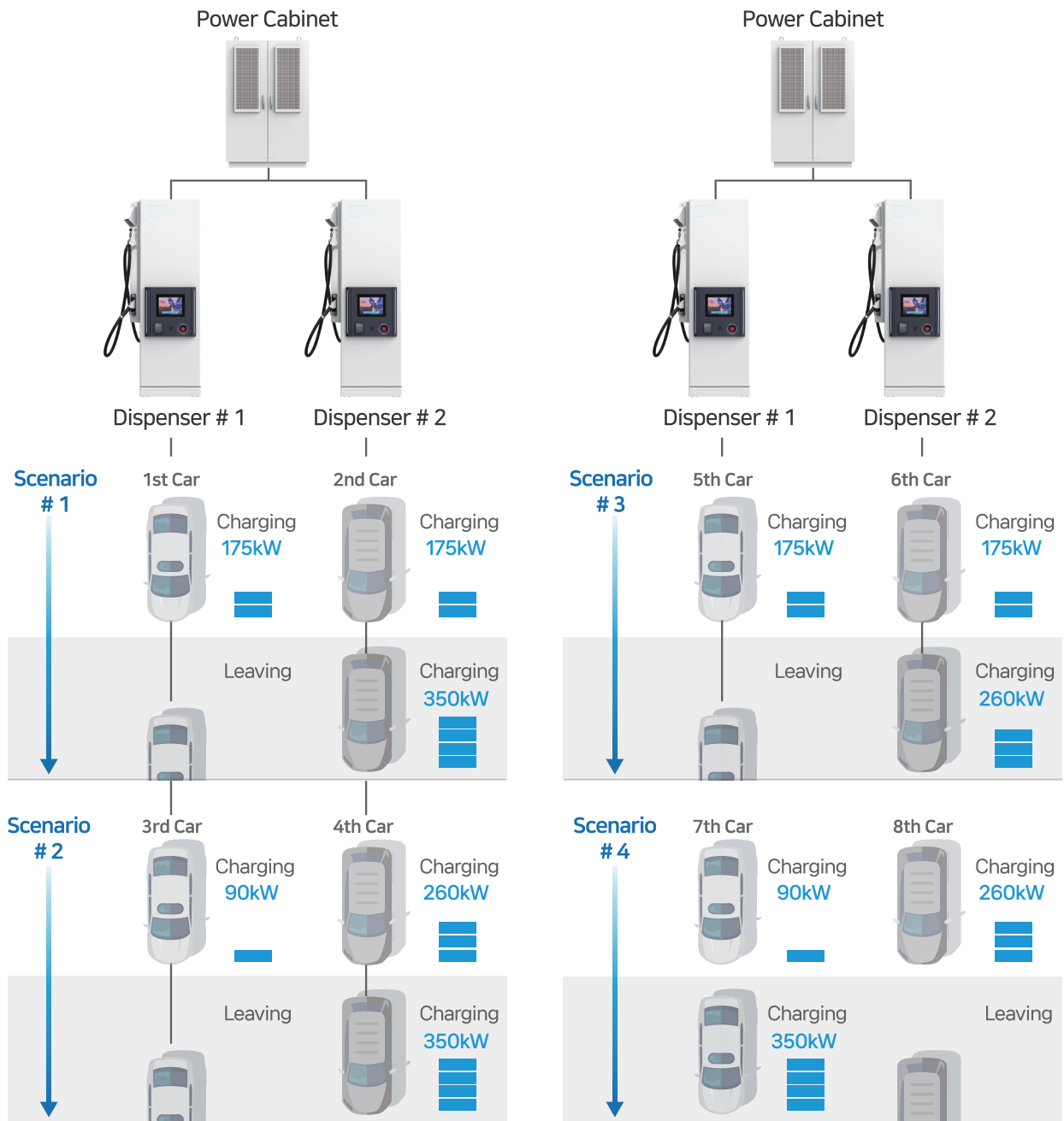


JC-9HG2-350/400-CX5 (CE)

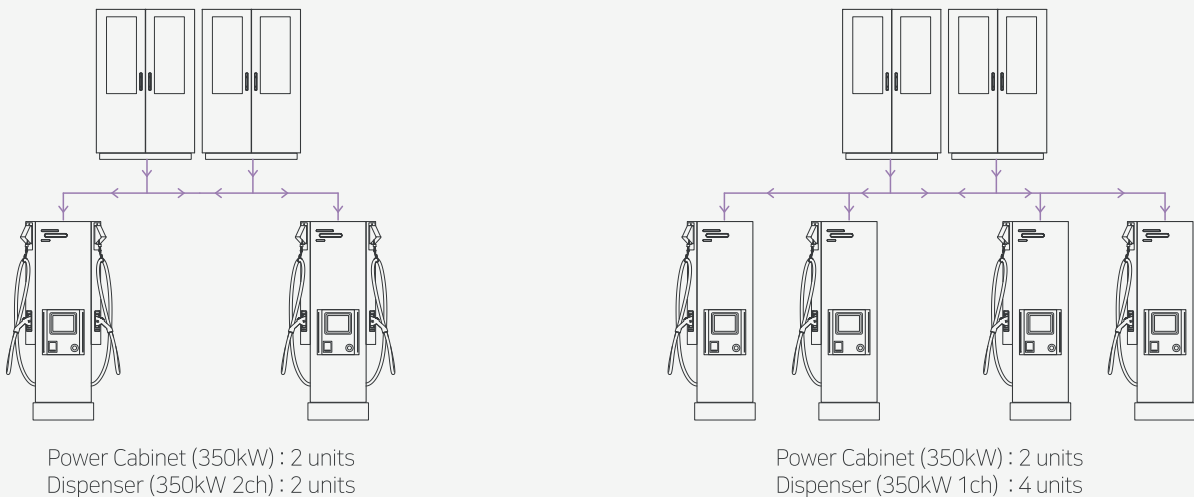
JC-94F2-350/400-OT5 (UL)

# Dynamic Power Sharing Scenarios

Flexible power distribution based on maximum output.  
Distribute electric power freely to increase charging efficiency.



## Configuration



# Specifications

## Dispenser

Specificaion	Dispenser 350kW JC-94F2-350-CX5 (CE) JC-94F2-350-OT5 (UL)	Dispenser 400kW JC-94F2-400-CX5 (CE) JC-94F2-400-OT5 (UL)	
General	Connector	CCS, NACS	
	Communication with EV	IEC 61851 PLC	
	Display	12.1" LCD Display, Touch screen	
	Support language	English, French, Spanish (Other languages available upon request)	
	Push buttons	1 emergency stop button	
	User authentication	ISO/IEC 14443 A/B Mifare RFID reader, Credit card reader, NFC	
Electric	Input	DC 1,000V, 240VAC, 60Hz (CE Version) DC 1,000V, 220VAC, 60Hz (UL Version)	
	Input   THD	< 5%	
	Output (DC Output1)	Voltage : 150~1,000VDC (Max) Current : 500A(Max) Max power : 350kW (liquid-cooled cable)	Voltage : 150~1,000VDC (Max) Current : 500A(Max) Max power : 400kW (liquid-cooled cable)
	Output (DC Output2)	Voltage : 150~1,000VDC (Max) Current : 500A(Max) Max power : 350kW (liquid-cooled cable)	Voltage : 150~1,000VDC (Max) Current : 500A(Max) Max power : 400kW (liquid-cooled cable)
Environment	Operating temperature	-30°C ~ 50°C (-22°F ~ 122°F)	
	Humidity	< RH95% (Non-condensing)	
Communication	Network interface	Ethernet, Cellular, WLAN	
	Protocol	OCPP1.6J / 2.0.1	
Safety standard	Protection	Over voltage, Over current, Short-circuit, Over temperature, Earth leakage, Surge protection, Contactor welding	
Mechanical	Protection degree	IP54 (NEMA 3R), IK10	
	Cooling	Forced air	
	Charging Cable Length (Standard)	5.5m (18ft) / Adjustable upon request	
	Dimension	996(W) x 2,098(H) x 432(D) mm (39.2(W) x 82.6(H) x 17(D) inch)	
	Weight	220kg (485lb)	

## Feature highlights



## UPTIME

- Guarantee over 97% uptime requirements
- Uptime : 98.40% per year
- Resolution Period : 0.95 day
- Remote and field service support
- Always up to date with latest standard and protocols

# Specifications

## Power Cabinet

Specificaion		Power Cabinet 350kW JC-9HG2-350-CX5 (CE) JC-9502-350-CT5 (UL)	Power Cabinet 400kW JC-9HG2-400-CX5 (CE) JC-9502-400-CT5 (UL)	
Electric	Input	3Ø4W, 380VAC, 50/60Hz, Max.385kVA or 440kVA (CE Version) 3Ø3W (no neutral), 480VAC, 60Hz, Max.385kVA or 440kVA (UL Version)		
	Input   THD	< 5%		
	Output	1CH Voltage : 150~1,000VDC(Max) Current : 500A(Max) Max power : 350kW	1CH Voltage : 150~1,000VDC(Max) Current : 500A(Max) Max power : 400kW	
		2CH Voltage : 150~1,000VDC(Max) Current : 500A(Max) Max power : 350kW	2CH Voltage : 150~1,000VDC(Max) Current : 500A(Max) Max power : 400kW	
	Power factor	> 0.98 (Full Scale)		
	Charging mode	CC, CV		
	Voltage accuracy	±1.0% (Full Scale)		
	Current accuracy	±1.0% (Full Scale)		
	Max. efficiency	> 95% (at rated voltage, rated current)		
	Isolation impedance	10MΩ@1,000V		
Environment	Operating temperature	-30°C~50°C (-22°F~122°F with derating)		
	Humidity	< RH95% (Non-condensing)		
Safety standard	Protection	Over voltage, Over current, Short-circuit, Over temperature, Earth leakage, Surge protection, Contactor welding		
Mechanical	Protection degree	IP54 (NEMA 3R), IK10		
	Cooling	Forced air		
	Dimension	1234(W) x 1,882(H) x 983(D) mm (48.6(W) x 74.1(H) x 38.7(D) inch)		
	Weight	980kg (2,160lb)		



EVSIIS chargers are designed in the most efficient way to meet the customer needs through advanced technology.

# AC charger

7kW / 11kW

## Key Features

CE, METus(NRTL), FCC Compliant  
Ideal choices for residential, community, and commercial AC charger  
4.3" LCD touch display (optional)  
Firmware update via OCPP remote connection  
Safe and intuitive to use  
Wall-mounted or Stand type



JC-92B1-7-OX (CE)  
JC-92B1-7/11-OT (UL)

## Specifications

<b>General</b>	Charging type	Mode 3, Level 2
	Connector	Type 1 (UL Version), Type 2 (CE Version)
	Display	4.3" LCD Display, Touch screen (optional)
	Support language	English (Other languages available upon request)
	Push buttons	1 stop button
	User authentication	ISO/IEC 14443 A/B Mifare RFID reader
<b>Electric</b>	Input	AC 240V, 50/60Hz, Max. 7kVA, single phase (CE Version) AC 240V, 50/60Hz, Max. 7kVA or 11kVA, single phase (UL Version)
	Output (DC Output1)	AC 240V, 32A, Max. 7kW (CE Version) AC 240V, 32A, Max. 7kW (UL Version) AC 240V, 50A, Max. 11kW (UL Version)
	Metering accuracy	±1%
	Communication protocol	OCPP 1.6J
<b>Environment</b>	Operating temperature	-30°C ~ 50°C (-22°F ~ 122°F)
	Humidity	< RH95% (Non-condensing)
<b>Safety standard</b>	Protection	Over voltage, Over current, Short-circuit, Over temperature, Under voltage, Ground fault including DC residual current protection, Surge protection, Contactor welding
	Communication	IEC 61851-1, IEC 61851-22
<b>Mechanical</b>	Protection degree	IP54 (NEMA 3R), IK10
	Charging Cable Length (Standard)	6m (19.7ft)
	Dimension	235(W) x 469(H) x 184(D) mm (9.3(W) x 18.5(H) x 7.2(D) inch)
	Weight	7kW : 9.3kg (CE Version) 7kW : 22lb (UL Version) 11kW : 24.3lb (UL Version)

### EVSIHQ

54, Jikji-daero 409beon-gil, Heungdeok-gu, Cheongju-si, Chungcheongbuk-do, (28443), Republic of Korea  
TEL. +82 43-265-6800 FAX. +82 43-265-6801

### EVSI R&D Center

3,4F, 179, Gasan digital 2-ro, Geumcheon-gu, Seoul, (08500), Republic of Korea

### EVSI America

1945 Burgundy Place, Ontario, CA 91761, USA  
TEL. +1 909-853-3515 FAX. +1 909-729-3515

H. [www.evsis.co.kr](http://www.evsis.co.kr)

E. [globalsales@evsis.co.kr](mailto:globalsales@evsis.co.kr)  
[biz@evsisamerica.com](mailto:biz@evsisamerica.com)